



## SSCAC, INC.

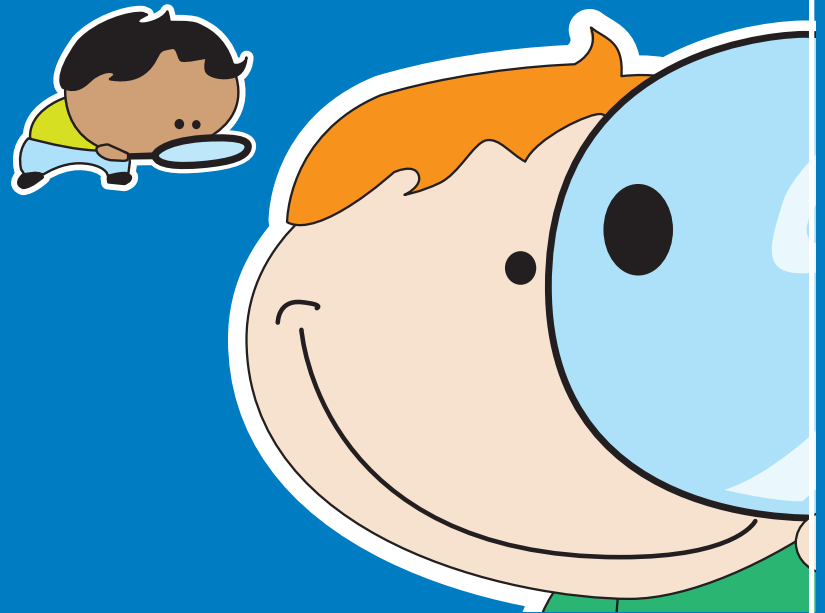
71 OBERY STREET  
PLYMOUTH, MA 02360  
508-747-7575

SOUTH SHORE FAMILY NETWORK IS A  
PROGRAM OF SOUTH SHORE COMMUNITY ACTION COUNCIL  
[WWW.SSCAC.ORG](http://WWW.SSCAC.ORG) | FIND US ON FACEBOOK

This map directory is for informational purposes only. Funded by  
a Coordinated Family & Community Engagement Grant from the  
Massachusetts Department of Early Education & Care.

# SEARCHING FOR QUALITY CHILD CARE?

KINGSTON CHILD CARE PROVIDERS



**SOUTH SHORE  
FAMILY NETWORK**

A CFCE PROGRAM OF  
SOUTH SHORE COMMUNITY ACTION COUNCIL

# KINGSTON CENTER BASED

## A. CRAYON COLLEGE, INC.

24 MAIN STREET  
KINGSTON MA 02364  
781-585-5437  
CENTER BASED: (I,T,P,K)(FT/FY)

## B. GROWTH UNLIMITED PRESCHOOL

7 GREEN STREET  
KINGSTON MA 02364  
781-585-5864  
CENTER BASED: (P)(N,SY)

## C. LITTLE PEOPLE'S COUNTRY DAY CARE

25 WAPPING ROAD  
KINGSTON MA 02364  
781-582-1399  
CENTER BASED: (I,T,P)(FT/FY)

## D. OLD COLONY Y/KINGSTON INTERMEDIATE

KINGSTON INTERMEDIATE SCHOOL  
65 SECOND BROOK STREET  
KINGSTON MA 02364  
508-889-8260  
CENTER BASED: (SA)(B&A/SY)

## E. SOUTH SHORE EARLY EDUCATION

142 PEMBROKE STREET  
KINGSTON MA 02364  
781-585-0400  
WWW.SSCAC.ORG  
CENTER BASED: (P)(N/SY)

## F. WOODAC ACRES PRESCHOOL

168 MAIN STREET  
KINGSTON MA 02364  
781-585-0041  
CENTER BASED: CALL FOR DETAILS

# FAMILY BASED

## 1. ARROWSMITH, KIM

5 WINTER STREET  
KINGSTON MA 02364  
781-582-3880  
FAMILY BASED: CALL FOR INFO

## 2. BUNKER, SANDRA J

25 EAST AVENUE  
KINGSTON MA 02364  
781-585-9848  
FAMILY BASED: (P)(FT/FY)

## 3. CASE, RENE

3 WALTER FAUNCE ROAD  
KINGSTON MA 02364  
781-582-1814  
FAMILY BASED: (I,T,P, SA)(FT/FY)

## 4. FULLER, DEBORAH

7 PINE RIDGE LANE  
KINGSTON MA 02364  
781-585-4745  
FAMILY BASED: (I,T,P)(FT/FY)

## 5. GILLIGAN, JENNIFER L.

5 NOTTINGHAM DRIVE  
KINGSTON MA 02364  
781-585-2949  
FAMILY BASED: (I,T,P)(FT/FY)

## 6. IZZO, MELISSA

16 KINGSTON STREET  
KINGSTON MA 02364  
781-291-9193  
FAMILY BASED: CALL FOR INFO

## 7. LIBBY, JOYCE

50 BROOKDALE STREET  
KINGSTON MA 02364  
781-582-3904  
FAMILY BASED: (I,T,P, K, SA)(FT/FY)

## 8. LOSCIUTO, SUZANNE A.

29 LYDON LANE  
KINGSTON MA 02364  
781-585-9512  
FAMILY BASED: (I,T,P)(FT/FY)

## 9. SJOSTEDT, BEVERLY

146 WAPPING ROAD  
KINGSTON MA 02364  
781-585-8815  
FAMILY BASED: (I,T,P,SA)(FT/FY)

# KINGSTON MASSACHUSETTS

## LICENSED CHILDCARE PROVIDERS

**AGES:** **I** = 1 mo. - 15 mo., **T** = 15 mo - 2.9 yrs, **P** = 2.9 yrs – Entering Kindergarten, **SA** = 5 yrs - 12 yrs;  
**SCHEDULES:** **FT** = Full day, **FY** = Full year, **SY** = School year, **PT** = Full day/Part week or Part day/Full week,  
**N** = 1/2 Day /Part week, **B** = Before school, **A** = After school, **SU** = Full day summer.

