



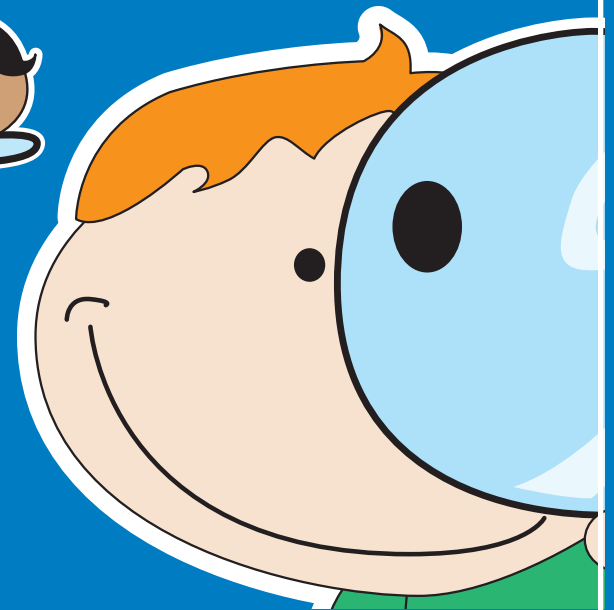
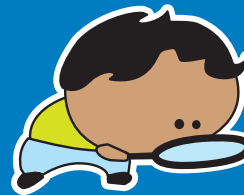
SSCAC, INC.
265 SOUTH MEADOW ROAD
PLYMOUTH, MA 02360
508-747-7575

COORDINATED FAMILY & COMMUNITY ENGAGEMENT IS A
PROGRAM OF SOUTH SHORE COMMUNITY ACTION COUNCIL
WWW.SSCAC.ORG | FIND US ON FACEBOOK

This map directory is for informational purposes only. Funded by
a Coordinated Family & Community Engagement Grant from the
Massachusetts Department of Early Education & Care.

SEARCHING FOR QUALITY CHILD CARE?

HINGHAM CHILD CARE PROVIDERS



**COORDINATED FAMILY &
COMMUNITY ENGAGEMENT**

A PROGRAM OF
SOUTH SHORE COMMUNITY ACTION COUNCIL

SOUTH SHORE COMMUNITY ACTION COUNCIL, INC. (SSCAC)

Administrative Office
Phone: 508-747-7575
Fax: 508-746-0031
Web: www.sscac.org

SOUTH SHORE FAMILY NETWORK

Debra Wightman (CFCE COORDINATOR)
Phone: (508) 747-7575 x6247
E-mail: dmwightman@sscac.org

Find us online at www.sscac.org or friend us on Facebook.



ABOUT SSCAC

Since 1965, South Shore Community Action Council, Inc. (SSCAC) has provided a range of critical services to low-income individuals and families on the South Shore. SSCAC runs many programs in the areas of Transportation, Youth and Family Development, Fuel Assistance, Income Maintenance, Emergency Food and Housing Assistance, Self-Sufficiency, and Energy Assistance. In addition to our main office located in Plymouth, SSCAC operates 3 South Shore Early Education sites (Plymouth, Marshfield, and Kingston) and 3 Fuel Assistance intake offices (Plymouth, Hyannis, and Martha's Vineyard).

Through the Coordinated Family and Community Engagement Program (CFCE), now known as South Shore Family Network, SSCAC promotes early literacy and provides family supports for South Shore residents of the following 11 towns: Carver, Cohasset, Duxbury, Halifax, Hanover, Hingham, Kingston, Norwell, Pembroke, Plympton, and Scituate. Funded by the Massachusetts Department of Early Education and Care, the South Shore Family Network program hosts community-based child and family activities throughout the year including:

- Children's literacy fairs and events,
- Parenting workshops,
- Toddler play groups, and
- Newborn home visiting.

In addition, the South Shore Family Network program staff serves as an information and referral resource for parents seeking information about child care and a range of family support services.

HINGHAM CENTER BASED

A. BRIGHT HORIZONS CHILD DEVELOPMENT CENTER

168 SHIPYARD DRIVE
HINGHAM MA 02043
781-740-5670
CENTER BASED: (I,T,P)(FT/FY)

B. DOLLY'S NURSERY

14 PINE STREET
HINGHAM MA 02043-1431
781-749-4213
CENTER BASED: (P)(FT/FY)

C. HARBOR HOUSE CHILD CARE CENTER

11 CONDITO ROAD
HINGHAM MA 02043
781-749-4774 EXT. 1846
CENTER BASED: CALL FOR INFO

D. HINGHAM COMMUNITY NURSERY SCHOOL

1101 MAIN STREET
HINGHAM MA 02043-3902
781-749-0029
CENTER BASED: (P)(N,SY)

E. JCC EARLY LEARNING CENTER AT CONGREGATION SHA'ARAY SHALOM

1112 MAIN STREET
HINGHAM MA 02043-3947
781-752-4000
CENTER BASED: (T,P)

F. KIDS IN ACTION HINGHAM PUBLIC SCHOOLS

220 CENTRAL STREET
HINGHAM MA 02043
781-741-1590
CENTER BASED: (P)(N,SY)

G. OLD COLONY MONTESSORI SCHOOL

247 GARDNER STREET
HINGHAM MA 02043-3707
781-749-3698
CENTER BASED: (P,SA)(FT/SY)

H. PRESCHOOL PLAYMATES

204 WHITING STREET
HINGHAM MA 02043-3713
781-749-2109
CENTER BASED: (I,C,P)(FT/FY)

I. SANDCASTLES CHILD CARE & LEARNING CENTER

313 EAST STREET
HINGHAM, MA 02043-2068
781-741-9995
CENTER BASED: CALL FOR INFO

J. SOUTH SHORE CONSERVATORY OF MUSIC

1 CONSERVATORY DRIVE
HINGHAM MA 02043-2647
781-749-7565 X17
CENTER BASED: CALL FOR INFO

K. TINY STEPS LEARNING CENTER

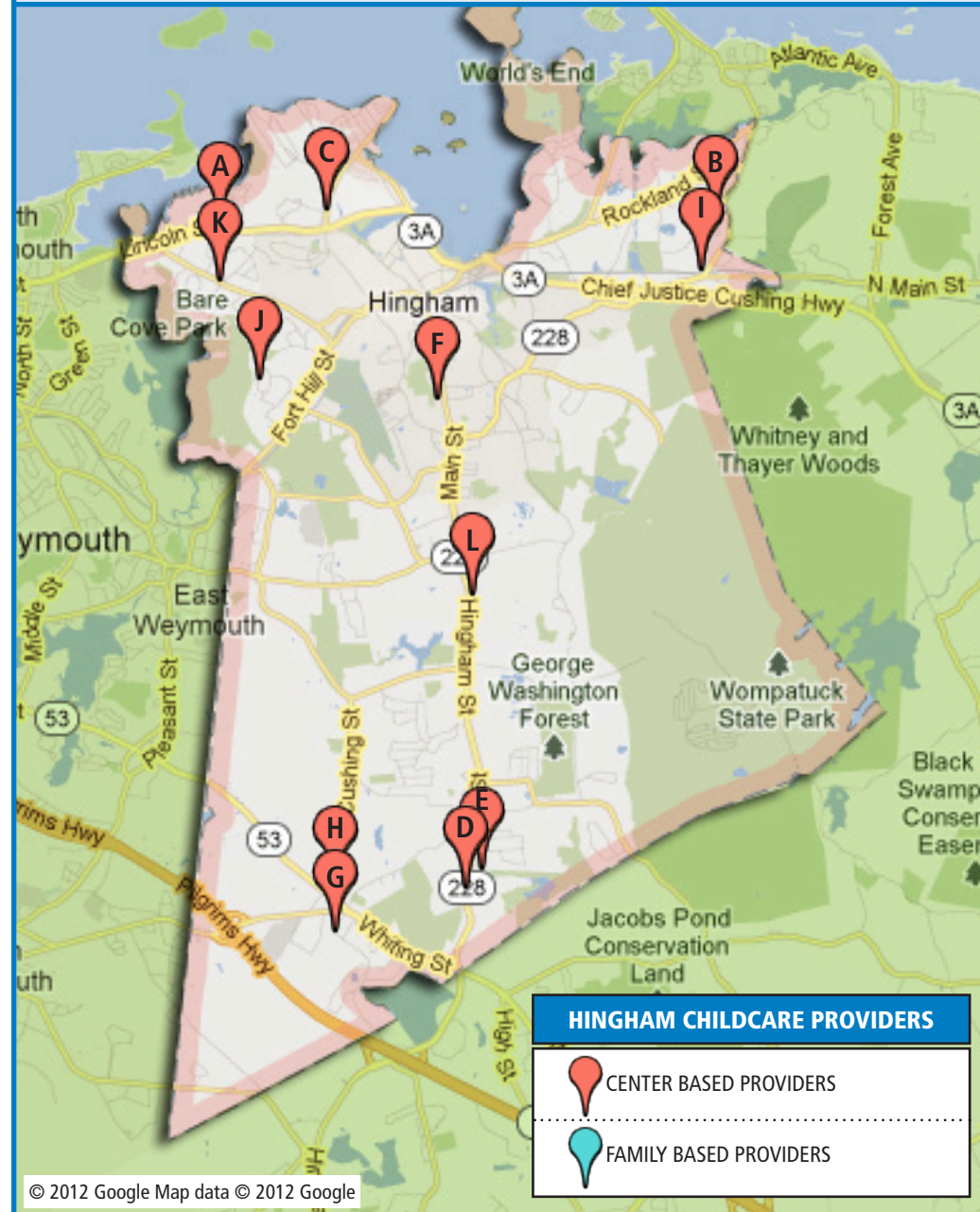
165 BEAL STREET
HINGHAM MA 02043-1501
781-740-8274
CENTER BASED: CALL FOR INFO

L. WILDER MEMORIAL NURSERY SCHOOL

666 MAIN STREET
HINGHAM MA 02043-3120
781-749-3518
CENTER BASED: (P)(N,SY)

HINGHAM MASSACHUSETTS LICENSED CHILDCARE PROVIDERS

AGES: **I** = 1 mo. - 15 mo., **T** = 15 mo - 2.9 yrs, **P** = 2.9 yrs – Entering Kindergarten, **SA** = 5 yrs - 12 yrs;
SCHEDULES: **FT** = Full day, **FY** = Full year, **SY** = School year, **PT** = Full day/Part week or Part day/Full week,
N = 1/2 Day /Part week, **B** = Before school, **A** = After school, **SU** = Full day summer.



HINGHAM

FAMILY BASED

1. ACHILLE, KELLY

194 OLD HOBART STREET
HINGHAM MA 02043
781-706-6611
CENTER BASED: CALL FOR INFO

2. CHILDS, MARY

104 WOMPATUCK ROAD
HINGHAM MA 02043-1109
781-749-0423
FAMILY BASED: (I,T,P)(FT/SY)

3. CHITTICK, JOAN

50 KIMBALL BEACH ROAD
HINGHAM MA 02043-1146
781-749-6194
FAMILY BASED: (P)(N/SY)

4. COMMESSO, ERICA

14 DALEY ROAD
HINGHAM MA 02043-1230
781-749-4112
FAMILY BASED: CALL FOR INFO

5. GOMEZ, ALAINE A.

211 CUSHING STREET
HINGHAM MA 02043-4809
781-740-1633
FAMILY BASED: (I,T,P)(FT/FY)

6. HUTCHISON, TAMMY

2 KNOLL ROAD
HINGHAM MA 02043
781-749-0024
FAMILY BASED: CALL FOR INFO

7. JAN, NEELAM

111 FITZROY DRIVE #321
HINGHAM MA 02043
781-335-3626
FAMILY BASED: CALL FOR INFO

8. LUNDIN, LINNEA

194 WOMPATUCK ROAD
HINGHAM MA 02043-1109
781-740-1279
FAMILY BASED: (I,T,P)(FT/FY)

9. PEGURRI, SHARON

101 ROCKLAND STREET
HINGHAM MA 02043-1007
781-556-5672
FAMILY BASED: (I,T,P)(FT/FY)

10. STASIO, ELIZABETH

30 CROW POINT LANE
HINGHAM MA 02043-1156
781-844-9592
FAMILY BASED: (I,T,P)(FT/FY)

11. STONE, VIRGINIA

150 WOMPATUCK ROAD
HINGHAM MA 02043-1109
781-749-1983
FAMILY BASED: (I,T,P)(FT/FY)

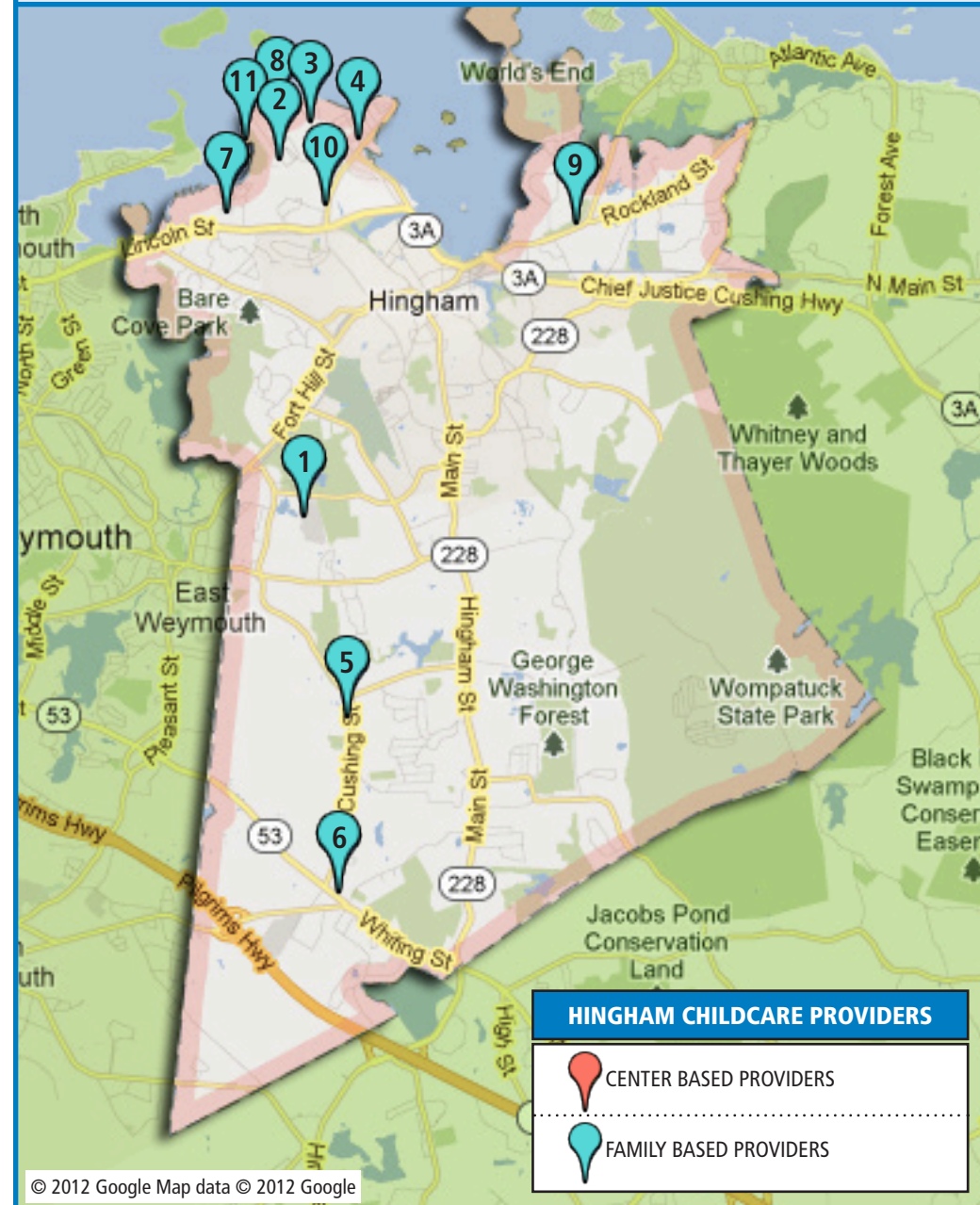
HINGHAM MASSACHUSETTS

LICENSED CHILDCARE PROVIDERS

AGES: **I** = 1 mo. - 15 mo., **T** = 15 mo - 2.9 yrs, **P** = 2.9 yrs – Entering Kindergarten, **SA** = 5 yrs - 12 yrs;

SCHEDULES: **FT** = Full day, **FY** = Full year, **SY** = School year, **PT** = Full day/Part week or Part day/Full week,

N = 1/2 Day /Part week, **B** = Before school, **A** = After school, **SU** = Full day summer.



HINGHAM CHILDCARE PROVIDERS

 CENTER BASED PROVIDERS

 FAMILY BASED PROVIDERS