



**SSCAC, INC.**

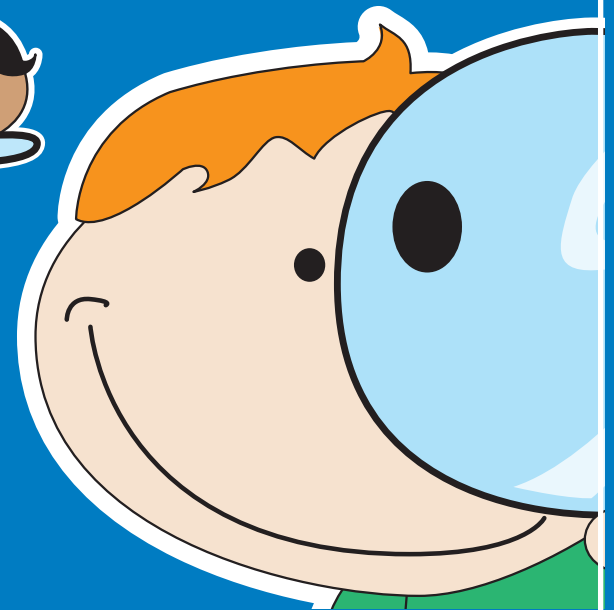
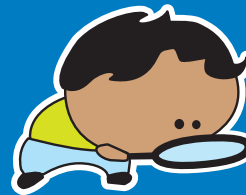
71 OBERY STREET  
PLYMOUTH, MA 02360  
508-747-7575

SOUTH SHORE FAMILY NETWORK IS A  
PROGRAM OF SOUTH SHORE COMMUNITY ACTION COUNCIL  
[WWW.SSCAC.ORG](http://WWW.SSCAC.ORG) | FIND US ON FACEBOOK

This map directory is for informational purposes only. Funded by  
a Coordinated Family & Community Engagement Grant from the  
Massachusetts Department of Early Education & Care.

# SEARCHING FOR QUALITY CHILD CARE?

HANOVER & NORWELL CHILD CARE PROVIDERS



**SOUTH SHORE  
FAMILY NETWORK**

A CFCE PROGRAM OF  
SOUTH SHORE COMMUNITY ACTION COUNCIL

## **SOUTH SHORE COMMUNITY ACTION COUNCIL, INC. (SSCAC)**

Administrative Office  
Phone: 508-747-7575  
Fax: 508-746-0031  
Web: [www.sscac.org](http://www.sscac.org)

### **SOUTH SHORE FAMILY NETWORK**

**Debra Wightman** (CFCE COORDINATOR)  
Phone: (508) 747-7575 x6247  
E-mail: [dmwightman@sscac.org](mailto:dmwightman@sscac.org)

Find us online at [www.sscac.org](http://www.sscac.org) or friend us on Facebook.



# **ABOUT SSCAC**

Since 1965, South Shore Community Action Council, Inc. (SSCAC) has provided a range of critical services to low-income individuals and families on the South Shore. SSCAC runs many programs in the areas of Transportation, Youth and Family Development, Fuel Assistance, Income Maintenance, Emergency Food and Housing Assistance, Self-Sufficiency, and Energy Assistance. In addition to our main office located in Plymouth, SSCAC operates 3 South Shore Early Education sites (Plymouth, Marshfield, and Kingston) and 3 Fuel Assistance intake offices (Plymouth, Hyannis, and Martha's Vineyard).

Through the Coordinated Family and Community Engagement Program (CFCE), now known as South Shore Family Network, SSCAC promotes early literacy and provides family supports for South Shore residents of the following 11 towns: Carver, Cohasset, Duxbury, Halifax, Hanover, Hingham, Kingston, Norwell, Pembroke, Plympton, and Scituate. Funded by the Massachusetts Department of Early Education and Care, the South Shore Family Network program hosts community-based child and family activities throughout the year including:

- Children's literacy fairs and events,
- Parenting workshops,
- Toddler play groups, and
- Newborn home visiting.

In addition, the South Shore Family Network program staff serves as an information and referral resource for parents seeking information about child care and a range of family support services.

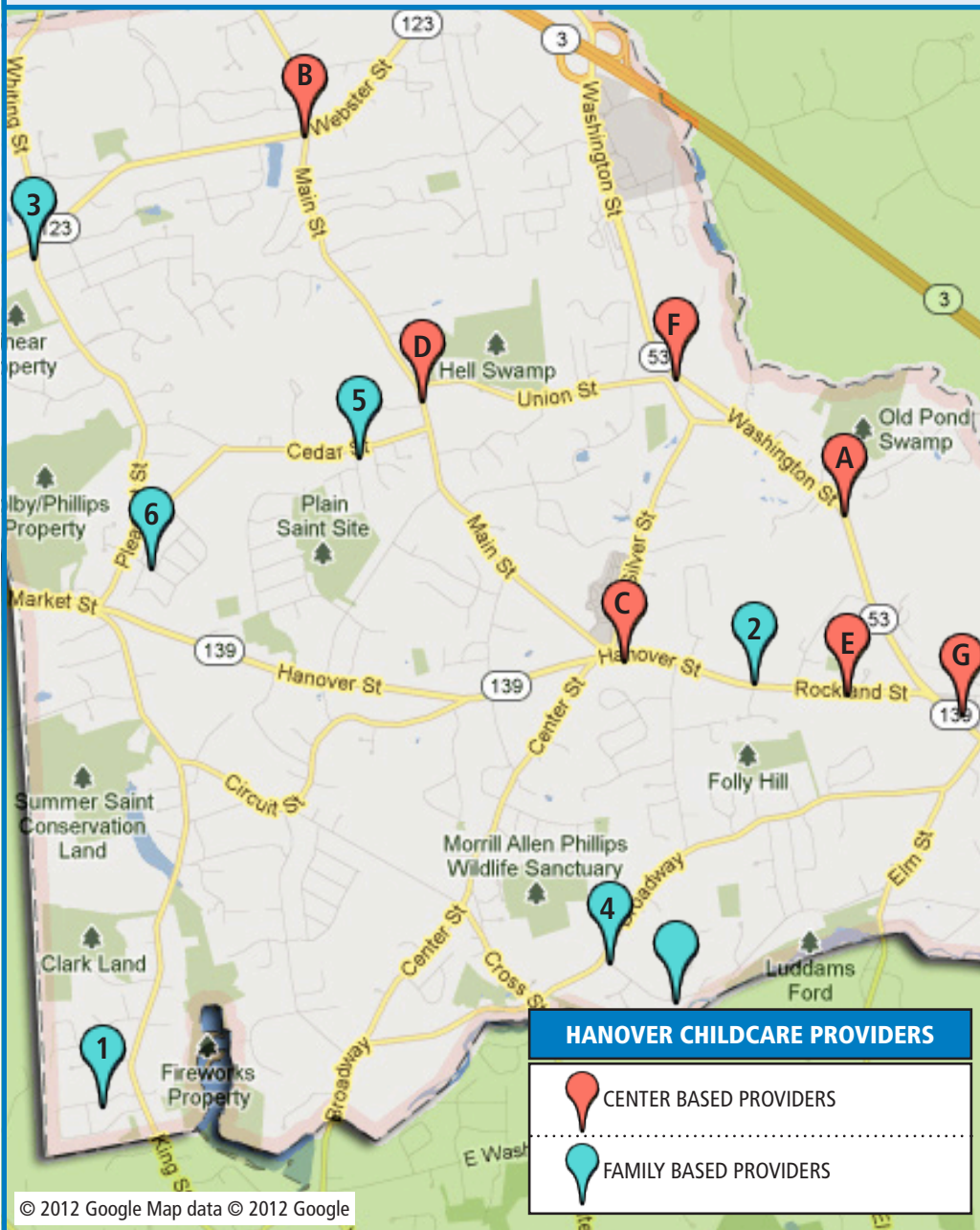
# HANOVER MASSACHUSETTS

## LICENSED CHILDCARE PROVIDERS

**AGES:** **I** = 1 mo. - 15 mo., **T** = 15 mo - 2.9 yrs, **P** = 2.9 yrs – Entering Kindergarten, **SA** = 5 yrs - 12 yrs;

**SCHEDULES:** **FT** = Full day, **FY**= Full year, **SY**= School year, **PT** = Full day/Part week or Part day/Full week,

**N** = 1/2 Day /Part week, **B** = Before school, **A** = After school, **SU** = Full day summer.



## HANOVER CENTER BASED

## FAMILY BASED

### A. BRIARWOOD CHILD ACADEMY

673 WASHINGTON STREET  
HANOVER MA 02339  
781-826-3014

Center Based: (I,T,P)(FT/FY)

### B. FIRST CLASS PRE-SCHOOL

580 WEBSTER STREET  
HANOVER MA 02339  
781-982-8606

Center Based: : (P)(N)

### C. HANOVER NURSERY SCHOOL AND DAY CARE

515 HANOVER STREET  
HANOVER MA 02339  
781-826-8604

CENTER BASED: CALL FOR DETAILS

### D. HARMONY FAMILY PRESCHOOL

590 MAIN STREET  
HANOVER MA 02339  
781-871-5156

CENTER BASED: (P)(N,SY)

### E. LUTHERAN CHURCH NURSERY SCHOOL

77 ROCKLAND STREET  
HANOVER MA 02339  
781-826-6107

CENTER BASED: (P)(N)

### F. SOUTH SHORE YMCA EARLY LEARNING CENTER

1075 WASHINGTON STREET  
HANOVER MA 02339  
781-826-7900

WWW.SSYMCA.ORG  
CENTER BASED: (I,T,P,SA)(FT/FY)

### G. STEPPING STONES CHILD CARE

17 CHURCH STREET  
HANOVER MA 02339  
781-826-8678

CENTER BASED: (P)(N)

### 1. ARMSTRONG, LAURA

79 OLDE FORGE ROAD  
HANOVER MA 02339  
781-826-3714

FAMILY BASED: CALL FOR INFO

### 2. CLEAVES, KAREN MARIE

281 HANOVER STREET  
HANOVER MA 02339  
781-826-0137

FAMILY BASED: CALL FOR INFO

### 3. HUSSAIN, NIGHT

1084 WEBSTER STREET  
HANOVER MA 02339  
339-469-1255

FAMILY BASED: (I,T,P)(FT/FY)

### 4. LYTTLE, KRISTINA

525 WATER STREET  
HANOVER MA 02339  
781-826-2071

FAMILY BASED: (I,T,P,SA)(FT/FY)

### 5. O'DOWD, REBECCA S.

124 CEDAR STREET  
HANOVER MA 02339  
781-878-4323

FAMILY BASED: CALL FOR INFO

### 6. TRIANA, CLAUDIA

19 HOOVER ROAD  
HANOVER MA 02339  
781-878-6225

FAMILY BASED: (I,T,P)(FT/FY)

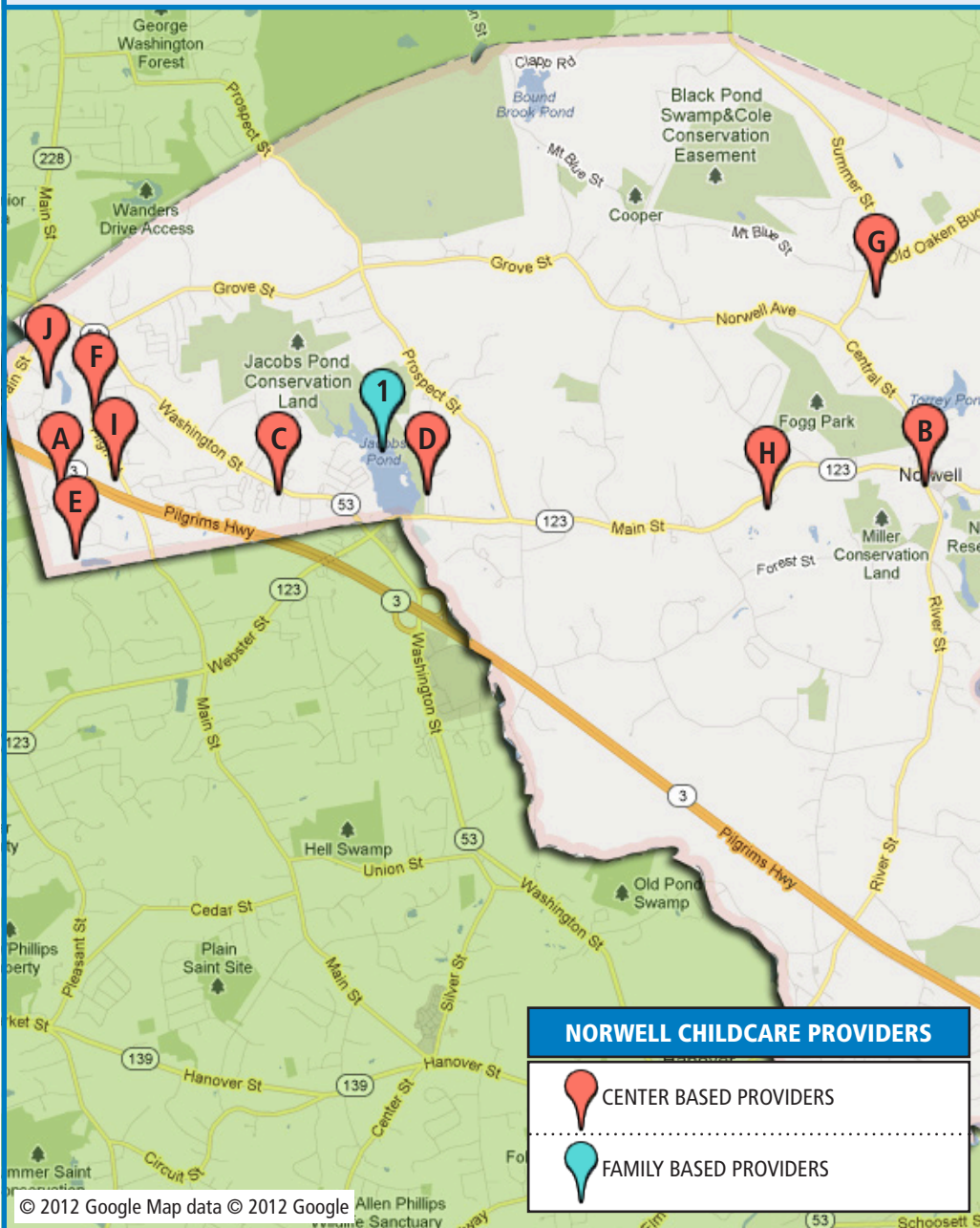
# NORWELL MASSACHUSETTS

## LICENSED CHILDCARE PROVIDERS

**AGES:** **I** = 1 mo. - 15 mo., **T** = 15 mo - 2.9 yrs, **P** = 2.9 yrs – Entering Kindergarten, **SA** = 5 yrs - 12 yrs;

**SCHEDULES:** **FT** = Full day, **FY**= Full year, **SY**= School year, **PT** = Full day/Part week or Part day/Full week,

**N** = 1/2 Day /Part week, **B** = Before school, **A** = After school, **SU** = Full day summer.



## NORWELL CENTER BASED

### A. BRIGHT HORIZONS AT NORWELL

77 LONGWATER DRIVE  
NORWELL MA 02061  
781-878-6077  
CENTER BASED: (I,T,P,SA)(FT/FY)

### B. FIRST PARISH PRESCHOOL

24 RIVER STREET  
NORWELL MA 02061  
781-659-1333  
CENTER BASED: (T,P)(N/SY)

### C. KINDERCARE LEARNING CENTER #1554

380 WASHINGTON STREET  
NORWELL MA 02061  
781-659-6530  
CENTER BASED: (I,T,P,K,SA)(FT/FY)

### D. NATURE CENTER PRESCHOOL AT SOUTH SHORE NATURAL SCIENCE CENTER

48 JACOBS LANE  
NORWELL MA 02061  
781-659-2559  
CENTER BASED: (P)(N/SY)

### E. SOUTH SHORE CHARTER AFTER SCHOOL PROGRAM

100 LONGWATER CIRCLE  
NORWELL MA 02061  
781-982-4202  
CENTER BASED: (SA)(B&A)/SY)

### F. SOUTH SHORE YMCA NORWELL SACC

81 HIGH STREET  
NORWELL MA 02061  
781-878-1499  
CENTER BASED: (SA)(SY)

### G. SOUTH SHORE YMCA WILLIAM G. VINAL ES

102 OLD OAKEN BUCKET ROAD  
NORWELL, MA 02061  
781-659-8820  
CENTER BASED: (SA)(SY)

### H. THE NEW NURSERY SCH OF UNITED CHURCH

460 MAIN STREET  
NORWELL MA 02061  
781-659-2535  
CENTER BASED: (T,P)(N/SY)

### I. THE RIDGE HILL SCHOOL

102 HIGH STREET  
NORWELL MA 02061  
781-871-0018  
CENTER BASED: (P,K)(N,SY)

### J. YOUNGER UNIVERSITY

40 ACCORD PARK DRIVE  
SUITE 102  
NORWELL MA 02061  
781-871-4994  
CENTER BASED: (I,T,P,K)(FT/FY)

## FAMILY BASED

### 1. PEACOCK, BARBARA

47 JACOBS TRAIL  
NORWELL MA 02061  
781-987-1523  
FAMILY BASED: (I,T,P,K,SA)(FT/FY)

### NORWELL CHILDCARE PROVIDERS

 CENTER BASED PROVIDERS

 FAMILY BASED PROVIDERS