



**SSCAC, INC.**

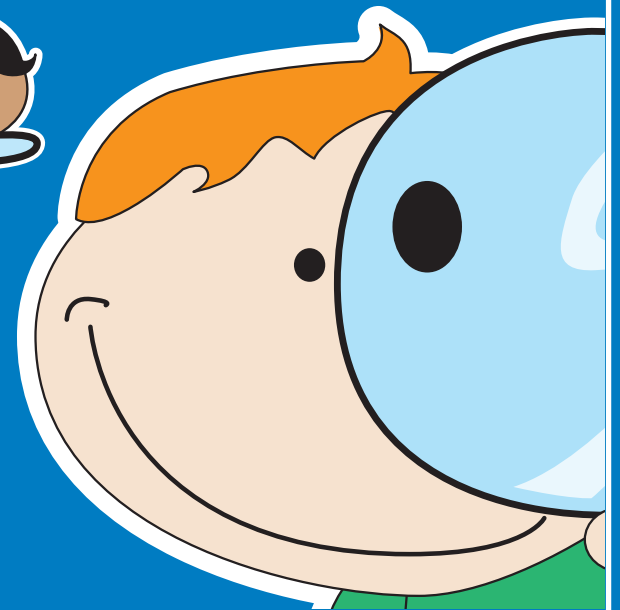
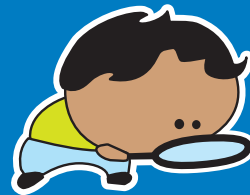
71 OBERY STREET  
PLYMOUTH, MA 02360  
508-747-7575

SOUTH SHORE FAMILY NETWORK IS A  
PROGRAM OF SOUTH SHORE COMMUNITY ACTION COUNCIL  
[WWW.SSCAC.ORG](http://WWW.SSCAC.ORG) | FIND US ON FACEBOOK

This map directory is for informational purposes only. Funded by  
a Coordinated Family & Community Engagement Grant from the  
Massachusetts Department of Early Education & Care.

# SEARCHING FOR QUALITY CHILD CARE?

HALIFAX & PLYMPTON CHILD CARE PROVIDERS



**SOUTH SHORE  
FAMILY NETWORK**

A CFCE PROGRAM OF  
SOUTH SHORE COMMUNITY ACTION COUNCIL

## **SOUTH SHORE COMMUNITY ACTION COUNCIL, INC. (SSCAC)**

Administrative Office  
Phone: 508-747-7575  
Fax: 508-746-0031  
Web: [www.sscac.org](http://www.sscac.org)

### **SOUTH SHORE FAMILY NETWORK**

**Debra Wightman** (CFCE COORDINATOR)  
Phone: (508) 747-7575 x6247  
E-mail: [dmwightman@sscac.org](mailto:dmwightman@sscac.org)

Find us online at [www.sscac.org](http://www.sscac.org) or friend us on Facebook.



# **ABOUT SSCAC**

Since 1965, South Shore Community Action Council, Inc. (SSCAC) has provided a range of critical services to low-income individuals and families on the South Shore. SSCAC runs many programs in the areas of Transportation, Youth and Family Development, Fuel Assistance, Income Maintenance, Emergency Food and Housing Assistance, Self-Sufficiency, and Energy Assistance. In addition to our main office located in Plymouth, SSCAC operates 3 South Shore Early Education sites (Plymouth, Marshfield, and Kingston) and 3 Fuel Assistance intake offices (Plymouth, Hyannis, and Martha's Vineyard).

Through the Coordinated Family and Community Engagement Program (CFCE), now known as South Shore Family Network, SSCAC promotes early literacy and provides family supports for South Shore residents of the following 11 towns: Carver, Cohasset, Duxbury, Halifax, Hanover, Hingham, Kingston, Norwell, Pembroke, Plympton, and Scituate. Funded by the Massachusetts Department of Early Education and Care, the South Shore Family Network program hosts community-based child and family activities throughout the year including:

- Children's literacy fairs and events,
- Parenting workshops,
- Toddler play groups, and
- Newborn home visiting.

In addition, the South Shore Family Network program staff serves as an information and referral resource for parents seeking information about child care and a range of family support services.

# HALIFAX

## CENTER BASED

### A. KIDS KASTLE KINGDOM

922 PLYMOUTH STREET  
 HALIFAX MA 02338  
 781-294-1975  
 CENTER BASED: (I,T,P,SA)(FT/FY)

### B. T.L.C. COUNTRY DAY SCHOOL

441 SOUTH STREET  
 HALIFAX MA 02338  
 781-293-6966  
 CENTER BASED: (P)(FT/FY)

### C. THE MAGICAL YEARS EARLY LEARNING CENTER

933 INDUSTRIAL DRIVE  
 HALIFAX MA 02338  
 781-294-9292  
 CENTER BASED: (I,T,P,SA)(FT/FY)

## FAMILY BASED

### 1. CARROLL, PAMELA A.

11 DEER RUN ROAD  
 HALIFAX MA 02338  
 781-293-2322  
 FAMILY BASED: CALL FOR INFO

### 2. MC LEOD, CHERI LYN

109 HOLMES STREET  
 HALIFAX MA 02338  
 781-294-8457  
 FAMILY BASED: (I,T,P)(FT/FY)

### 3. SHIELDS, LAUREN

22 DEER RUN ROAD  
 HALIFAX MA 02338  
 781-293-7473  
 FAMILY BASED: (I,T,P)(FT/FY)

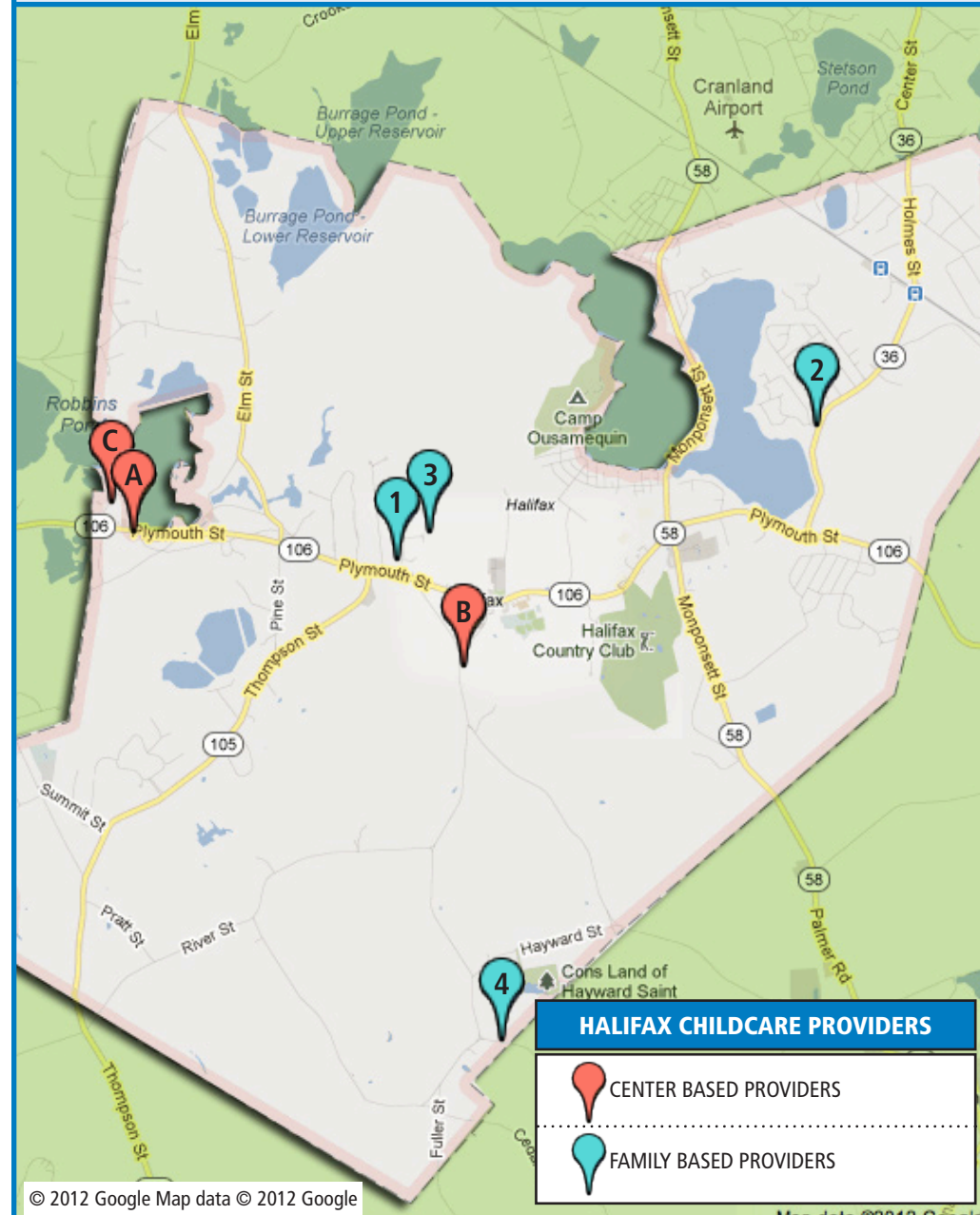
### 4. WINNETUXET CHILDREN'S PLACE

3 EAST STREET  
 HALIFAX MA 02338  
 781-293-5588  
 FAMILY BASED: CALL FOR INFO

# HALIFAX MASSACHUSETTS

## LICENSED CHILDCARE PROVIDERS

**AGES:** **I** = 1 mo. - 15 mo., **T** = 15 mo - 2.9 yrs, **P** = 2.9 yrs – Entering Kindergarten, **SA** = 5 yrs - 12 yrs;  
**SCHEDULES:** **FT** = Full day, **FY** = Full year, **SY** = School year, **PT** = Full day/Part week or Part day/Full week,  
**N** = 1/2 Day /Part week, **B** = Before school, **A** = After school, **SU** = Full day summer.



# PLYMPTON CENTER BASED

## A. PUDDLE JUMPERS LEARNING CENTER LLC

256 MAIN STREET  
PLYMPTON MA 02367  
781-582-8668  
CENTER BASED: (I,T,P,SA)(FT/FY)

## B. THE CHILDREN'S GARDEN SCHOOL BARROW, MARY ANN

90 BROOK STREET  
PLYMPTON MA 02367  
781-585-2698  
CENTER BASED: (P,SA)(FT/FY)

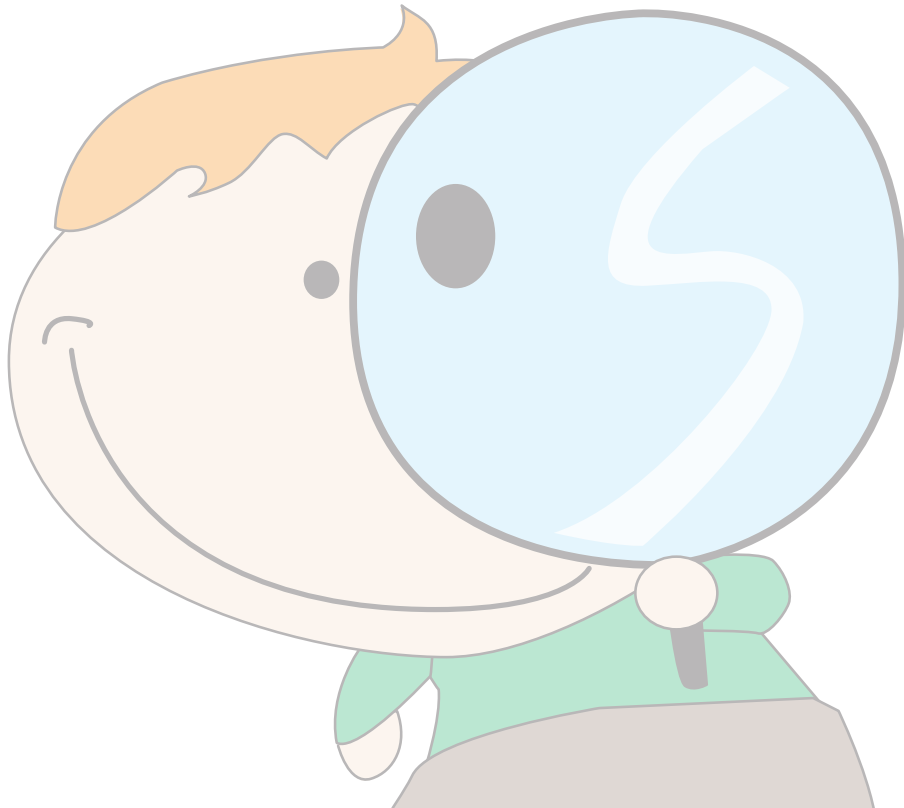
# FAMILY BASED

## 1. PERRON, KELLY A.

23 UPLAND ROAD  
PLYMPTON MA 02367  
508-930-2473  
FAMILY BASED: (I,T,P,K,SA)(FT/FY)

## 2. YUREWICZ, TRACY L.

73 MAYFLOWER ROAD  
PLYMPTON MA 02367  
781-582-8682  
FAMILY BASED: CALL FOR INFO



# PLYMPTON MASSACHUSETTS

## LICENSED CHILDCARE PROVIDERS

**AGES:** **I** = 1 mo. - 15 mo., **T** = 15 mo - 2.9 yrs, **P** = 2.9 yrs – Entering Kindergarten, **SA** = 5 yrs - 12 yrs;  
**SCHEDULES:** **FT** = Full day, **FY** = Full year, **SY** = School year, **PT** = Full day/Part week or Part day/Full week,  
**N** = 1/2 Day /Part week, **B** = Before school, **A** = After school, **SU** = Full day summer.

