



SSCAC, INC.

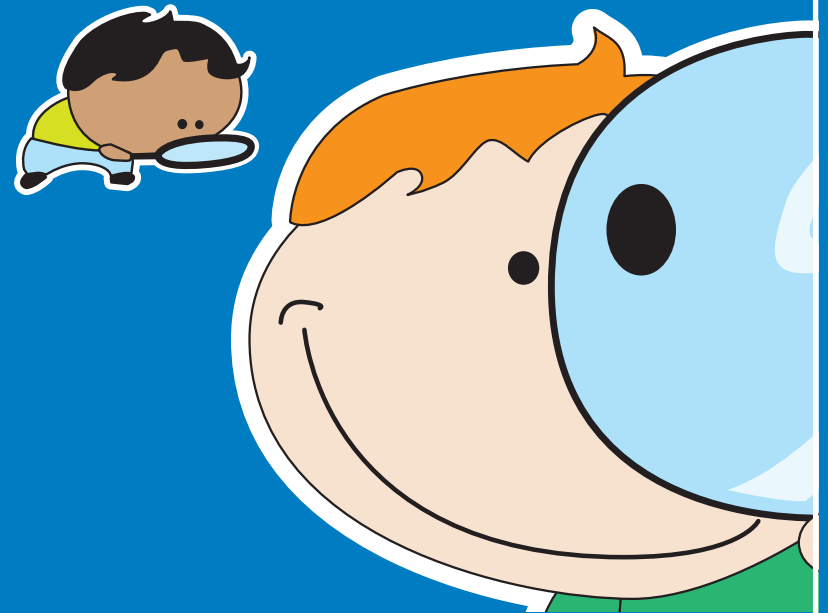
71 OBERY STREET
PLYMOUTH, MA 02360
508-747-7575

SOUTH SHORE FAMILY NETWORK IS A
PROGRAM OF SOUTH SHORE COMMUNITY ACTION COUNCIL
WWW.SSCAC.ORG | FIND US ON FACEBOOK

This map directory is for informational purposes only. Funded by
a Coordinated Family & Community Engagement Grant from the
Massachusetts Department of Early Education & Care.

SEARCHING FOR QUALITY CHILD CARE?

COHASSET & SCITUATE CHILD CARE PROVIDERS



**SOUTH SHORE
FAMILY NETWORK**

A CFCE PROGRAM OF
SOUTH SHORE COMMUNITY ACTION COUNCIL

SOUTH SHORE COMMUNITY ACTION COUNCIL, INC. (SSCAC)

Administrative Office
Phone: 508-747-7575
Fax: 508-746-0031
Web: www.sscac.org

SOUTH SHORE FAMILY NETWORK

Debra Wightman (CFCE COORDINATOR)
Phone: (508) 747-7575 x6247
E-mail: dmwightman@sscac.org

Find us online at www.sscac.org or friend us on Facebook.



ABOUT SSCAC

Since 1965, South Shore Community Action Council, Inc. (SSCAC) has provided a range of critical services to low-income individuals and families on the South Shore. SSCAC runs many programs in the areas of Transportation, Youth and Family Development, Fuel Assistance, Income Maintenance, Emergency Food and Housing Assistance, Self-Sufficiency, and Energy Assistance. In addition to our main office located in Plymouth, SSCAC operates 3 South Shore Early Education sites (Plymouth, Marshfield, and Kingston) and 3 Fuel Assistance intake offices (Plymouth, Hyannis, and Martha's Vineyard).

Through the Coordinated Family and Community Engagement Program (CFCE), now known as South Shore Family Network, SSCAC promotes early literacy and provides family supports for South Shore residents of the following 11 towns: Carver, Cohasset, Duxbury, Halifax, Hanover, Hingham, Kingston, Norwell, Pembroke, Plympton, and Scituate. Funded by the Massachusetts Department of Early Education and Care, the South Shore Family Network program hosts community-based child and family activities throughout the year including:

- Children's literacy fairs and events,
- Parenting workshops,
- Toddler play groups, and
- Newborn home visiting.

In addition, the South Shore Family Network program staff serves as an information and referral resource for parents seeking information about child care and a range of family support services.

COHASSET CENTER BASED

A. BROWN BEAR CHILDREN'S CENTER

152 KING STREET
COHASSET MA 02025-1316
781-383-0733
CENTER BASED: (I,T,P)(FT/FY)

B. CARRIAGE HOUSE NURSERY SCHOOL

23 N MAIN STREET
COHASSET MA 02025-1818
781-383-9785
CENTER BASED: (T,P)(N/SY)

C. SO SHORE COMMUNITY CENTER NURSERY SCHOOL

3 N MAIN STREET
COHASSET MA 02025-1863
781-383-0036
CENTER BASED: (P)(N/SY)

COHASSET FAMILY BASED

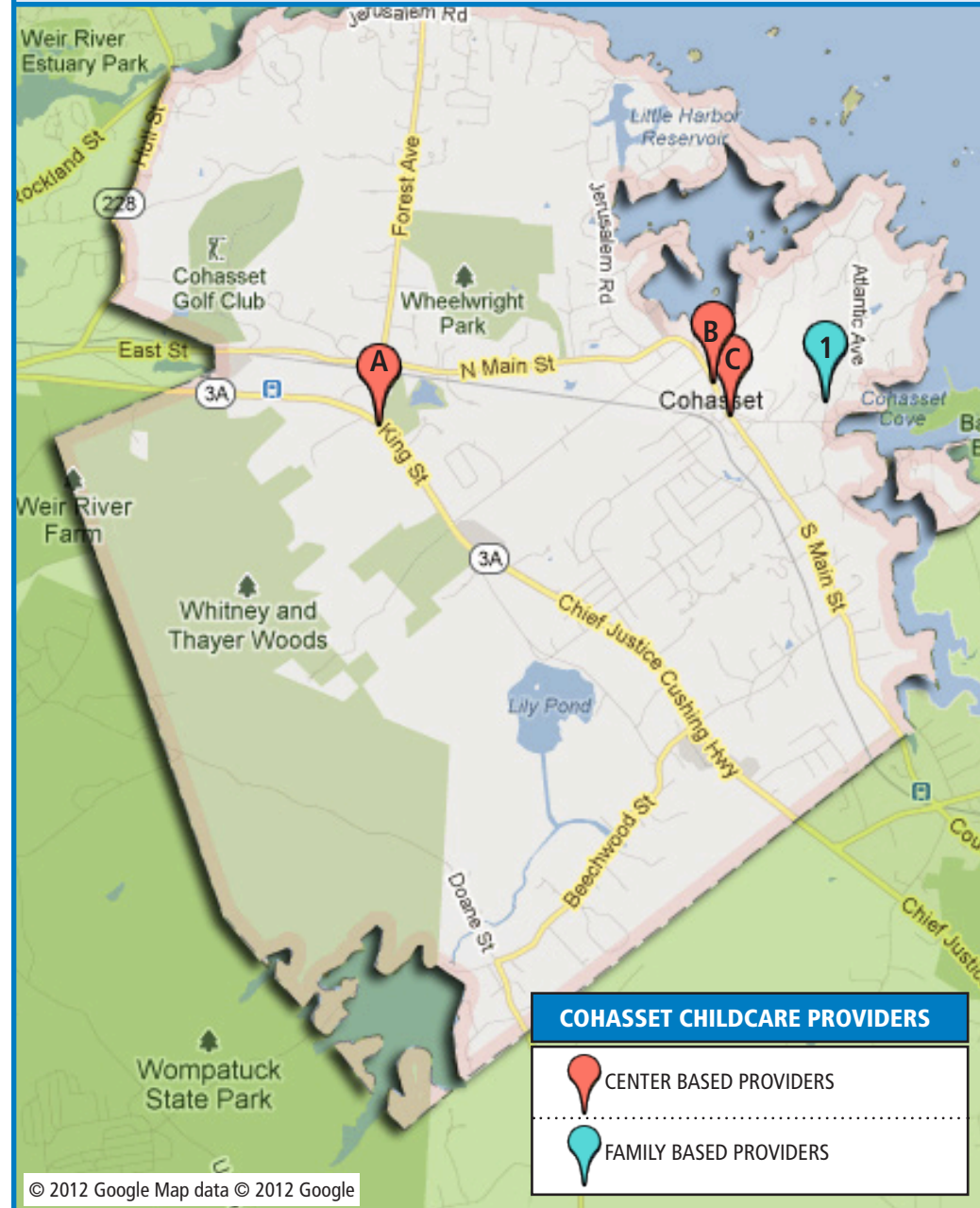
1. PREVITE, MARILYN

38 SUMMER STREET
COHASSET MA 02025
781-383-9723
FAMILY BASED: (T,P)(FT/FY)

COHASSET MASSACHUSETTS

LICENSED CHILDCARE PROVIDERS 2015

AGES: **I** = 1 mo. - 15 mo., **T** = 15 mo - 2.9 yrs, **P** = 2.9 yrs – Entering Kindergarten, **SA** = 5 yrs - 12 yrs;
SCHEDULES: **FT** = Full day, **FY** = Full year, **SY** = School year, **PT** = Full day/Part week or Part day/Full week,
N = 1/2 Day /Part week, **B** = Before school, **A** = After school, **SU** = Full day summer.



SCITUATE CENTER BASED

A. BEACH STREET SCHOOL

381 COUNTRY WAY
SCITUATE MA 02066-2511
781-545-7595
CENTER BASED: (P)(N/SY)

B. ERDMAN FAMILY SCHOOL

330 FIRST PARISH ROAD
SCITUATE MA 02066-3859
781-545-9309
CENTER BASED: (P)(N/SY)

C. LIL' MUNCHKINS CHILD CARE & PRESCHOOL

681 FIRST PARISH ROAD
SCITUATE MA 02066-3113
781-545-7675
CENTER BASED: (I,T,P)(FT/FY)

D. OWL'S CROSSING PRESCHOOL

660 COUNTRY WAY
SCITUATE, MA 02066
781-544-0200
CENTER BASED: (P, N)

E. QUACKERS PRE-SCHOOL, INC

39 INDIAN WIND DRIVE
SCITUATE MA 02066-3021
781-545-8338
CENTER BASED: (P)(F/SY)(N/SU)

F. SOUTH SHORE YMCA - CUSHING ES

1 ABERDEEN DRIVE
SCITUATE, MA 02066
781-829-8585
www.ssymca.org
CENTER BASED: (SA)

G. SOUTH SHORE YMCA - HATHERLY ES

72 ANN VINAL ROAD
SCITUATE, MA 02066
781-829-8585
www.ssymca.org
CENTER BASED: (SA)

H. SOUTH SHORE YMCA - JENKINS ES

54 VINAL AVENUE
SCITUATE, MA 02066
781-829-8585
www.ssymca.org
CENTER BASED: (SA)

I. SOUTH SHORE YMCA - WAMPATUCK ES

266 TILDEN ROAD
SCITUATE, MA 02066
781-829-8585
www.ssymca.org
CENTER BASED: (SA)

SCITUATE FAMILY BASED

1. BERKELAAR-GREEN, SERENA

380 COUNTRY WAY
SCITUATE MA 02066-2512
781-545-7571
FAMILY BASED: CALL FOR INFO

2. BLEAKNEY, THOMAS P

189 MANN LOT ROAD
SCITUATE MA 02066-1829
781-378-1131
FAMILY BASED: (I,T,P)(FT/FY)

3. BURNS, LINDA

118 LAWSON ROAD
SCITUATE MA 02066-2546
781-545-1147
FAMILY BASED: CALL FOR INFO

4. CURLEY, LILLIAN PUDDLE JUMPERS PLAY SCHOOL

745 COUNTRY WAY
SCITUATE MA 02066
781-383-1000
FAMILY BASED: (I,T,P)(FT/FY)

5. KELLY, KAREN

12 GRIDLEY BRYANT RD
SCITUATE MA 02066
781-545-7282
FAMILY BASED: (I,T,P)(FT/PT/FY)

6. MCCUSKER, MEAGHAN

611 COUNTRY WAY
SCITUATE MA 02066-2055
781-378-1694
FAMILY BASED: CALL FOR INFO

7. PALMER, CAROLINE JEAN

568 FIRST PARISH ROAD
SCITUATE MA 02066-3207
781-545-0634
FAMILY BASED: (I,T,P,K,SA)(T-F)
(FT/FY)

8. PERRI, COLLEEN P.

3 CHESTER STREET
SCITUATE MA 02066-4001
781-378-1875
FAMILY BASED: CALL FOR INFO

9. ROONEY, JENNIFER

59 NORWELL AVENUE
SCITUATE MA 02066-2232
781-545-2330
FAMILY BASED: (T,P,K)(F/FY)

10. ST. ONGE, MARILYN

16 LANTERN LANE
SCITUATE MA 02066-4218
781-545-8167
FAMILY BASED: CALL FOR INFO

11. THOMAS, SUSAN

11 STANDISH AVENUE
SCITUATE MA 02066-2375
781-545-1454
FAMILY BASED: (I,T,P)(F/FY)

SCITUATE MASSACHUSETTS

LICENSED CHILDCARE PROVIDERS 2015

AGES: **I** = 1 mo. - 15 mo., **T** = 15 mo - 2.9 yrs, **P** = 2.9 yrs – Entering Kindergarten, **SA** = 5 yrs - 12 yrs;
SCHEDULES: **FT** = Full day, **FY** = Full year, **SY** = School year, **PT** = Full day/Part week or Part day/Full week,
N = 1/2 Day /Part week, **B** = Before school, **A** = After school, **SU** = Full day summer.

