



SSCAC, INC.

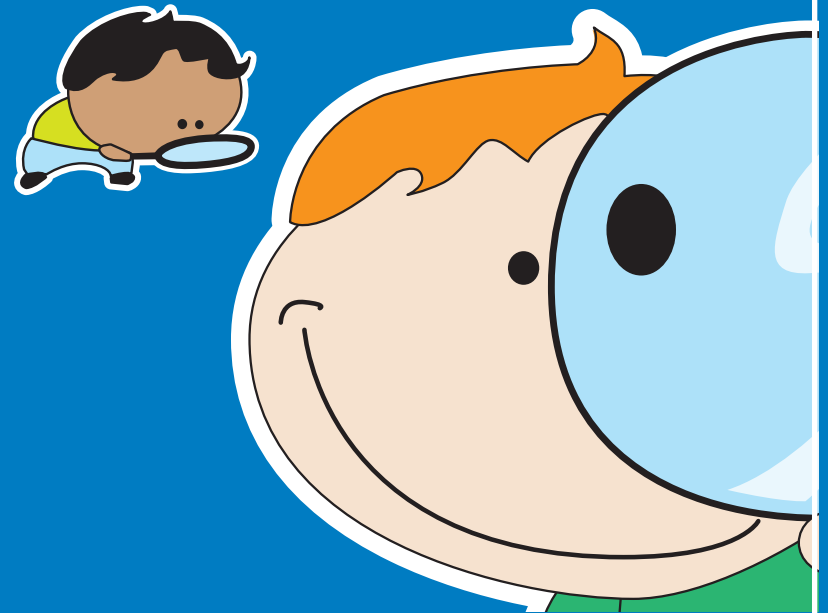
71 OBERY STREET
PLYMOUTH, MA 02360
508-747-7575

SOUTH SHORE FAMILY NETWORK IS A
PROGRAM OF SOUTH SHORE COMMUNITY ACTION COUNCIL
WWW.SSCAC.ORG | FIND US ON FACEBOOK

This map directory is for informational purposes only. Funded by
a Coordinated Family & Community Engagement Grant from the
Massachusetts Department of Early Education & Care.

SEARCHING FOR QUALITY CHILD CARE?

CARVER CHILD CARE PROVIDERS



**SOUTH SHORE
FAMILY NETWORK**

A CFCE PROGRAM OF
SOUTH SHORE COMMUNITY ACTION COUNCIL

CARVER

CENTER BASED

A. CAPT PAL SCHOOL

115 MAIN STREET
CARVER MA 02330
508-866-5415
CENTER BASED: (P)(N/SY)

B. CRANBERRY CROSSING EARLY EDUCATION CENTER, INC.

42 NORTH MAIN STREET
CARVER MA 02330
508-866-2400
CENTER BASED: (I,T,P,SA)(FT/FY)

C. KIDSTOP EARLY CHILDHOOD CENTER, INC.

185 PLYMOUTH STREET
CARVER MA 02330
508-866-9200
[HTTP://KIDSTOPEARLYCHILDHOOD.WEEBLY.COM/](http://kidstopearlychildhood.weebly.com/)
CENTER BASED: (I,T,P)(FT/FY)

D. LITTLE CRUSADERS EARLY LEARNING CENTER

145 SOUTH MAIN STREET
CARVER MA 02330
508-465-0256
CENTER BASED: (I,T,P,SA)(FT/FY)

E. OLD COLONY Y/CARVER

85 MAIN STREET
CARVER MA 02330
508-833-4796
CENTER BASED: (SA)(B/A/SU)

FAMILY BASED

1. ASVESTAS, MARLAINA

23 BATES POND ROAD
CARVER MA 02330
781-510-9536
(I,T,P)(FT/FY)

2. BLANKENSHIP, CORINNE

56 ROCHESTER ROAD
CARVER MA 02330
508-866-2535
FAMILY BASED: (I,T,P,SA)
(B,A,FT/FY)

3. BLOTNER, MARIE C.

14 OLD CENTER STREET
CARVER MA 02330
508-866-6935
FAMILY BASED: (I,T,P)(FT/SY)

4. CRIVELLO, JEANNIE

13 LILLIAN WAY
CARVER MA 02330
508-272-2251
FAMILY BASED: (I,T,P,SA)(FT/FY)

5. DENNEN, DIANA

13 EVERETT STREET
CARVER MA 02330
508-866-2673
FAMILY BASED: (I,T,P)(FT/FY)

6. INGS, ERIN

98 TREMONT STREET
CARVER MA 02330
508-441-1975
FAMILY BASED: CALL FOR INFO

7. MOSHER, KATHLEEN

76 FOSDICK ROAD
CARVER MA 02330
508-866-2258
FAMILY BASED: (I,T,P,SA)(FT/FY)

8. MUISE, SAMANTHA

26 BEAVER DAM ROAD
CARVER MA 02330
781-243-1140
FAMILY BASED: CALL FOR DETAILS

9. PLANTE, JENNIFER

41 WENHAM RD
CARVER MA 02330
508-866-7930
JENPLANTE44@GMAIL.COM
FAMILY BASED: (I,T,P)(FT/FY)

10. ROZEN, SHELLY M.

4 HARVEST VIEW WAY
CARVER MA 02330
508-866-3160
FAMILY BASED: (I,T,P,SA)(FT/FY)

11. WAITT, KAREN LEIGH

26 SHAW STREET
CARVER MA 02330
508-866-2858
FAMILY BASED: (I,T,P)(FT/FY)

CARVER MASSACHUSETTS

LICENSED CHILDCARE PROVIDERS

AGES: **I** = 1 mo. - 15 mo., **T** = 15 mo - 2.9 yrs, **P** = 2.9 yrs – Entering Kindergarten, **SA** = 5 yrs - 12 yrs;
SCHEDULES: **FT** = Full day, **FY** = Full year, **SY** = School year, **PT** = Full day/Part week or Part day/Full week,
N = 1/2 Day /Part week, **B** = Before school, **A** = After school, **SU** = Full day summer.

